

Kitchensafe



Keeping residential & domestic kitchens safe from fire

A cost effective, safe and easy to install automatic fire suppression system for homeowners, landlords and tenants. Kitchensafe fire suppression delivers peace of mind.



**TESTED & APPROVED
TO UL300A**

Knock Down Kitchen Fires **Fast**

The Kitchensafe fire suppression system is designed to meet the requirements of domestic and residential kitchens, and is Third party tested and approved to UL300A.

The system is the ideal solution to protect cook top areas in assisted living, student accommodation and domestic properties where the cook top is a major risk.

Kitchensafe is compatible with all two, four and six burner ranges and is quick and easy to install directly to the wall or inside a kitchen cupboard, out of sight.

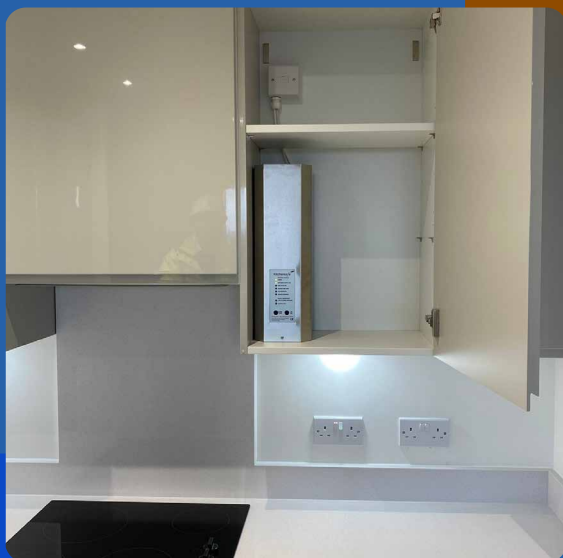
This unique system consists of an easy to clean stainless steel wall mounted cabinet which houses the agent tank, electronics and stainless steel hoses.

Fully Automatic Fire Protection

In the event of a fire Kitchensafe operates automatically, dousing the flames and removing the need for people to use conventional extinguishers or fire blankets.

The system typically extinguishes a fire within 5 seconds of discharge, allowing the remaining discharge time to cool and render the affected area completely safe. Following system activation the cooking area is easily cleaned and ready for use, unlike conventional extinguisher types such as dry powder.

- | | | |
|-----------------|--|---------------------------|
| ✓ Fuel Cut-Off | ✓ Temperature Detection | ✓ Service Reminder |
| ✓ Gas Detection | ✓ Building Management System Interface | ✓ System Fault Indicators |



State of the Art Digital Technology

Kitchensafe uses state of the art digital technology to sense high temperatures and fire conditions. The system can be connected to remote gas detectors and in house building management or fire alarm systems.

In the event of a fire being detected, this unique system automatically shuts off the fuel supply, whether this is gas or electric, to reduce the risk of re-ignition.

The Kitchensafe system is quick and easy to install by a Marlowe Kitchen Fire Suppression trained and approved distributor.

Available in 3 Different Models:

Model KSC 001 – Single Nozzle System

This single nozzle model is sufficient to cover a range up to 800mm maximum width. The sensor to monitor temperature is installed to the underside of the extraction hood.

Model KSC 002 – Twin Nozzle System

This twin nozzle model is sufficient to cover a range up to 1200mm maximum width. The sensor to monitor temperature is installed to the underside of the extraction hood.

Model KSC 003 – Single or Twin Nozzles System for Integration into Extraction Hood

The numbers of nozzles are dependent on the size of range up to 1200mm max width. The supplied nozzles can then be integrated in to the extraction hood subject to space available to install nozzle adaptor. The sensor to monitor temperature is installed to the underside of the extraction hood.

For all models the cabinet containing the cylinder and control panel can be installed adjacent to the canopy or up to 4.5m from the manifold or extraction hood where the nozzles are installed. The manifold, nozzles and temperature sensor are installed in the canopy area as per the Kitchensafe installation guidelines. Normal working temperature range +5°C to 60°F.

Features

Temperature Detection

An audible alarm sounds at 50°C to make the user aware that high temperatures have been detected. Should the temperature rise to 70°C, the system will automatically discharge the wet chemical suppression agent, cut off fuel supply and provide signal to a third party connection if required.

Service Reminder

The system will remind the user every 12 months that a service is required.

System Fault Indicators

For complete peace of mind the system will alert the user should there be a sensor fault or low cylinder pressure

Fuel Cut Off

A 240v AC control interface is provided for use with either a gas solenoid or electric switch to prevent reignition.

Gas Detection

Gas detectors can be wired to the system to prevent asphyxiation. These can be Natural Gas, LPG, or Carbon Monoxide.

BMS

A Building Management System output is fitted as standard to the control panel for connection by others.

